

B2|DSF Service

B2|DSF Service is a powerful, efficient and interactive tool that allows IP-based application sharing within collaborative sessions.

The application is a client to the **B2|Collaboration and Integration Server**, and also supports sharing of information and knowledge over the network, such that complex work processes can be done in a cross disciplinary team.

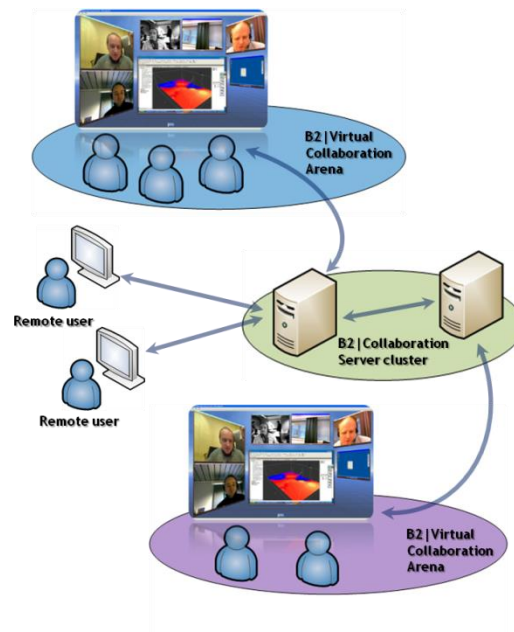
The application takes advantage of the extensive logging and documentation features of the B2 framework, and is compatible with **B2|Virtual View** and **B2|Virtual Arena**.

Functionality

B2|DSF Service supports one-to-one, one-to-many and many-to-many collaborative scenarios, and has built in features that allow users to apply different and asymmetric mitigation strategies in collaborative scenarios with limited bandwidth.

B2|DSF Service allows desktop sharing from an unmanned workstation to any **B2|Virtual View** or **B2|Virtual Arena** client, without the use of traditional hardware-based screen controllers or complex cabling/switching systems.

B2|DSF Service represents a software- and IP-based alternative to RGB-cables and proprietary black-boxes, with substantial higher degree of flexibility, removing the geographic borders between users that needs to collaborate in real-time by using the IP-network. Since it is utilizing **B2|Collaboration and Integration Server**, collaboration can take place within projects and sessions, providing the required structure and envelope.

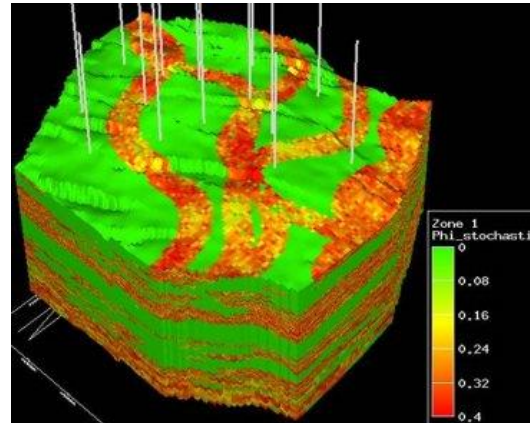
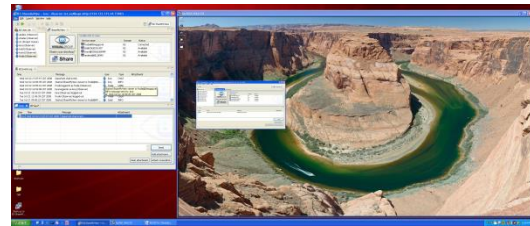


Features

- Share applications in both 2D and 3D
- No special hardware required
- Remote view-only or full remote interaction capabilities
- Support for high-performance application sharing of 2D and 3D applications with view only or full remote control from multiple participants
- Asymmetric resolutions support within collaborative sessions
- Resolution independent
- Sharing of region, desktop, logical window
- Sharing of multiple monitors
- Scaling and resizing support
- Multi-windowing on any surface
- Compatible with **B2|Virtual View** and **B2|Virtual Arena**

Relevant work flows

- Drilling support at rig or installation
- Operations monitoring in onshore operations centers
- Collaboration within discipline networks
- Main office to field office collaboration
- Remote control of multiple systems from a central location
- Real-time operations center or collaboration rooms
- Accessing office workstation from any location



B2 infrastructure

The **B2|DSF Service** is one of the components in the B2 suite. The B2 suite also contains the required server and integration components, such as the **B2|Collaboration and Integration Server**, **B2|Meta Model** and **B2|Integration Modules**.

This common infrastructure serves end-user application clients such as the **B2|Integrated Well Planning**, **B2|Integrated Operations**, **B2|Virtual View** and **B2|Virtual Arena**.

Contact information

Visual Solutions AS (worldwide HQ)
Fagernes 4, 5043 Bergen, Norway
Tel.: +47 5532 0000
Email: info@bbvisuals.no
Web: <http://www.bbvisuals.no>

BB Visual Solutions Inc. (US)
16111 Cairway, Suite 150, Houston, TX 77084, US
Tel.: +1 832-296-4690
Email: info@bbvisuals.com
Web: <http://www.bbvisuals.com>